

# Model 5CD by

CORNER DOUBLE



**Model 5CD**

**DOUBLE RACK  
CAPACITY IN  
A LIMITED SPACE...!**

*Top mount control cabinet  
complete with automatic  
chemical system always  
ensures constant use of  
chemicals which provide  
sparkling results.*



***This Double Duty Model fits into the corner  
of your Dishwashing area and washes  
74 Racks Per Hour***

At American Dish Service, Quality People, Designs,  
and Products have been the foundations of our  
organization for over **45 years**.

***[www.americandish.com](http://www.americandish.com)***

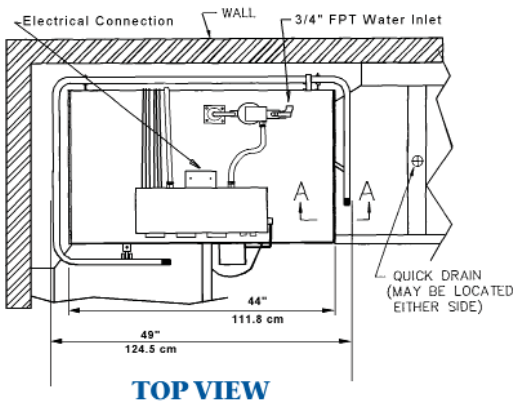


**American Dish Service**  
Manufacturers of Ware Washing Equipment

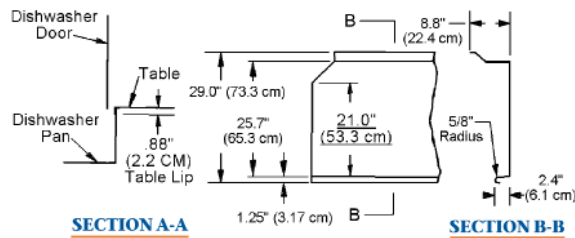
900 Blake Street Edwardsville, KS 66111-3820 **Toll Free (800) 922-2178 Phone (913) 422-3700 Fax (913) 422-6630**

# Model 5-CD

- Cleans 74 Racks Per Hour
- Great Door Clearance at 20 1/2"
- Stainless Steel Air Gap
- Quick Release Spray Arms
- Built-in Scrap Accumulator
- 1 1/2 HP Wash/Rinse Pump
- Available Right Front or Left Front Installations
- Automatic Chemical Dispensing
- 90 Second Complete Time Cycle
- Auto Start with Door Safety Switch
- Delime Switch located in Control Panel
- Smooth Door Operation
- Dual Screening Protects Pump
- Available with Chemical Alarms



**TOP VIEW**



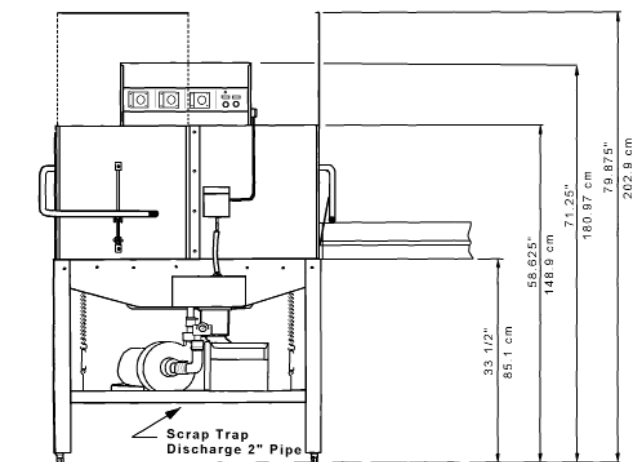
**SECTION A-A**

**SECTION B-B**

**TOP VIEW**  
TYPICAL TABLE DETAILS

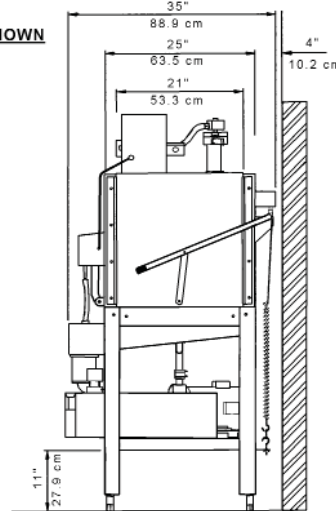
**CAUTION:**  
Electrical and plumbing connections should be made by a qualified Service Person who will comply with all available federal, state, and local health, Electrical, Plumbing, and Safety codes.

**NOTE: LEFT FRONT ENTRY SHOWN**



**FRONT VIEW**

\*Manufacturer reserves the right to modify these specifications in compliance with regulatory agencies and manufacturing expediency



**SIDE VIEW**



## Model 5-CD Specifications

### Model 5-CD

<b>RATED CAPACITY</b> (Racks Per Hour)	74
<b>WASH TIME</b> (Sec.)	45
<b>RINSE TIME</b> (Sec.)	30
<b>DWELL</b> (Sec.)	15
<b>TOTAL CYCLE TIME</b> (Sec.)	90
<b>WASH TANK CAPACITY</b> (Min.)	3.2 Gallons 12.1 Liters
<b>WATER TEMPERATURE</b>	120 Deg. F Min. 49 Deg. C Min.
<b>WATER CONSUMPTION</b>	3.2 Gallons Per Cycle 12.1 Liters Per Cycle
<b>MOTOR</b>	1.5 HP 1.125 KW
<b>ELECTRICAL RATINGS</b>	115 Volts Single Phase 20 Amps
Connect to Supply Source using 10-12 AWG Copper wires using non-time delay fuse of 20 amp rating or 20 amp circuit breaker.	
<b>RACK SIZE</b> (2)	19 3/4" x 19 3/4" 50.2 x 50.2 cm 20 1/2" x 21" 52.07 x 53 cm
<b>DOOR CLEARANCE</b>	3/4" FPT 52.07 x 53 cm
<b>WATER INLET</b>	3/4" FPT
<b>DRAIN</b> (Scrap Trap)	2" Pipe
<b>HEIGHT</b> (Doors Open)	79.875"
<b>HEIGHT</b> (Doors Closed)	71.25"
<b>WIDTH</b> (Overall)	49"
<b>DEPTH</b> (Overall)	124.5 cm 34"
<b>SHIPPING WEIGHT</b>	86.4 cm 410 lbs. 186 kg
<b>SHIPPING DIMENSIONS</b>	60" L x 36" W x 78" H 152.4 cm x 91.4 cm x 198.1 cm

Effective: 10/2010

© 10/2010

**WARNING:** Cancer and Reproductive Harm - [www.P65Warnings.ca.gov](http://www.P65Warnings.ca.gov)

ADS has built a strong history based on Customer Service, Quality and Reliability. A Commitment to Excellence is the driving force behind American Dish Service.

900 Blake Street Edwardsville, KS 66111-3820

Toll Free (800) 922-2178 Phone (913) 422-3700 Fax (913) 422-6630